

Viewing Etiquette:

FOR YOUR SAFETY & SAFETY OF THE BIRDS

- Do not stop on paved roadways. Use designated roadside pull-offs. (see map)
- When day viewing on gravel roads, use caution when pulling off and stay in your vehicle to view, using it as a 'blind'.
- Most land on the Platte River is private property. Please respect the landowners and do not trespass.
- Do not approach the birds. It is illegal to harass cranes in any matter. Sandhill Cranes are hunted in much of the US.
- Be prepared for cold temperatures. Wear dark clothes and lots of layers. Warm hats, boots, and gloves are recommended.
- Do not use flash when photographing.

Sunrise and sunset are prime viewing times on the river. During the day, the cranes are in the fields eating.

Kearney - Nebraska

Located on I-80 just minutes from the Platte River. Cultural attractions, amazing restaurants, & welcoming hospitality, Cranes love Kearney & so will you!



1,800
HOTEL
ROOMS



125+
EATERIES
& BARS



9
CULTURAL
MUSEUMS



20+ MILES
OF HIKE &
BIKE TRAIL

EVENTS - ATTRACTIONS - RESTAURANTS - HOTELS

VISIT**KEARNEY**.ORG



Take Flight



Photo: Don Brockmeier

Offering daily nonstop jet service from Kearney to Denver (DIA) & Chicago (ORD)

Book today at [united.com](https://www.united.com)

Flights operated by SkyWest Airlines.

Crane WATCH GUIDE

KEARNEY
NEBRASKA



KEARNEYCRANEWATCH.COM

Welcome to the
SANDHILL CRANE CAPITAL
of the World!

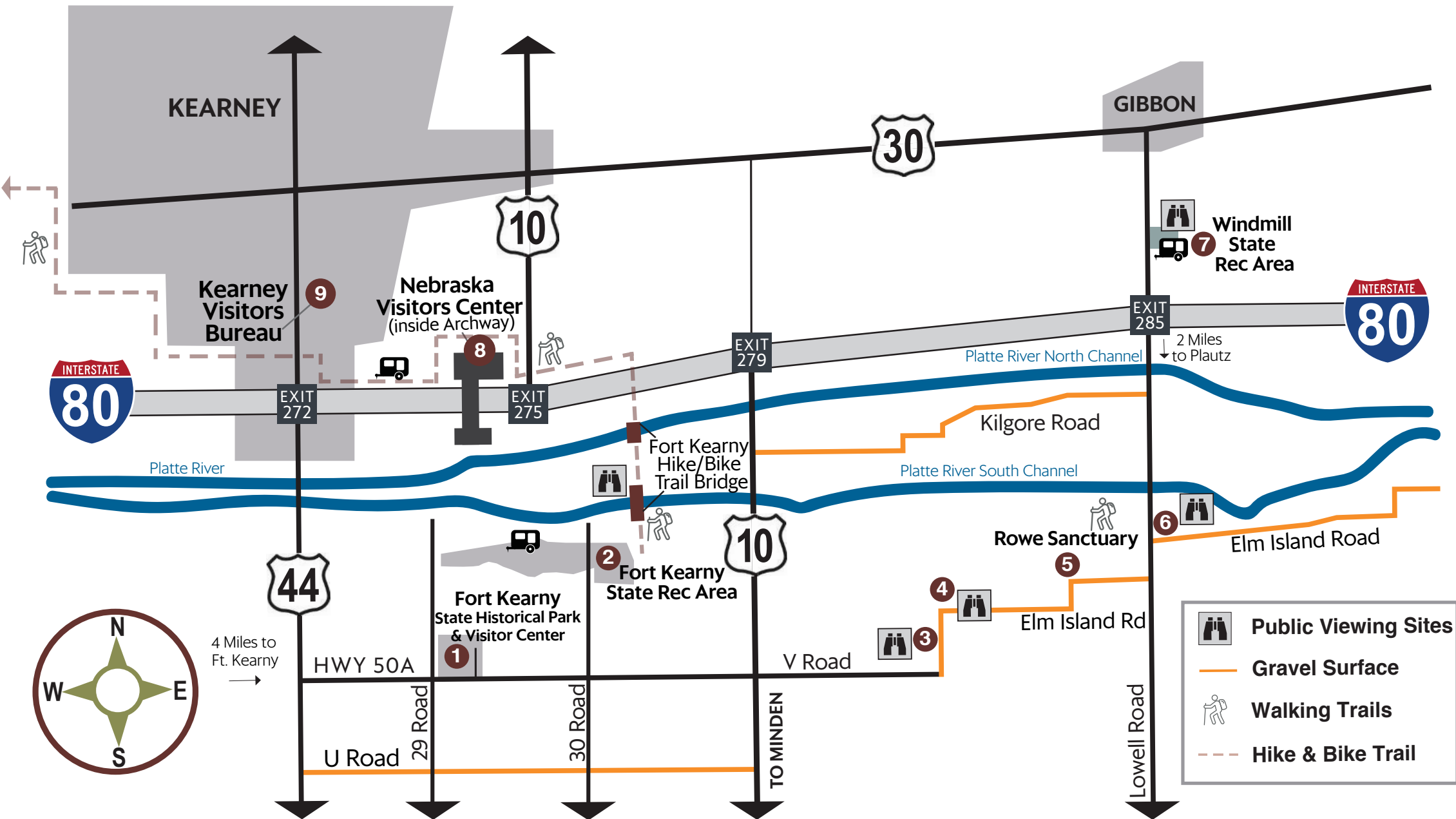
Join us to experience the great migration!

For eight weeks from late February to early April, the fascinating Sandhill Crane Spring Migration happens in the heart of Nebraska. More than 80% of the world's Sandhill Crane population converges on Nebraska's Platte River. It is an enchanting experience, that can only be truly appreciated in person.

The Sandhill Cranes migrate from southern wintering grounds to northern breeding grounds in Canada, Alaska, and Siberia. They stop along the Platte to rest and gain body fat as they prepare for their journey north.

Other wildlife such as Whooping Cranes, eagles, ducks, geese, and shorebirds also migrate through Central Nebraska during this time.





4 Miles to Ft. Kearny

KEARNEYCRANEWATCH.COM

- Crane Viewing Updates
- Crane Watching Etiquette
- Self Guided Tours
- Hike & Bike Trail Map



Audubon's Rowe Sanctuary

Located 15 miles from Kearney, Rowe Sanctuary lies in the heart of a critical spring staging area for migrating Sandhill Cranes.
 Guided Tours • Visitor Center • Gift Shop • Nature Trails
 (Guided tours available with reservation)

Crane Cam

Watch Rowe Sanctuary's Crane Cam to see live views from the Platte River and get a glimpse of the magic of the migration.
 Watch at rowe.audubon.org

RIVER VIEWING

- 5 IAIN NICOLSON AUDUBON CENTER AT ROWE SANCTUARY**
 44450 Elm Island Road (Gibbon, NE)
 Guided Crane Tours available with reservation.
rowe.audubon.org 308-468-5282
- 2 FORT KEARNY STATE RECREATION AREA HIKE/BIKE BRIDGE**
 2196 30 Road, Kearney, NE
 1/4 mile East of Fort Kearny Historical Park. 300 yard walk from the parking area. **STATE PARK PERMIT REQUIRED**
- 6 CPNRD PLAUTZ RIVER VIEWING PLATFORM**
 2 miles south of 1-80 Exit 285 (Gibbon)

DAY VIEWING

- 3 AUDUBON'S ROADSIDE VIEWING SITE**
 Roadside site for day viewing. 2.5 Miles W of Rowe Sanctuary.
- 4 CPNRD ROADSIDE VIEWING SITE**
 Roadside site for day viewing. 2 Miles W of Rowe Sanctuary.
- 7 WINDMILL STATE RECREATION AREA**
 2625 Lowell Rd (Exit 285) **STATE PARK PERMIT REQUIRED**

VISITOR INFORMATION

- 1 FORT KEARNY STATE HISTORICAL PARK & VISITOR CENTER**
 1020 V Road (Hwy 50A) **STATE PARK PERMIT REQUIRED**
outdoornebraska.gov/fortkearny 308-865-5305
- 9 KEARNEY VISITORS BUREAU**
 1007 2nd Ave 308-237-3178
- 8 NEBRASKA VISITOR CENTER**
 3060 E 1st Street (Inside Archway)